



## Overview Brochure

*See your business in a new way  
To improve productivity,  
Envision success, and  
Accelerate growth.*



## About Us

---

We spent a considerable amount of time searching for a cost effective solution to augment our development staff and found The Gemini. The Gemini is a rare breed in the environment, we keep our word and deliver on time and more often than not, the product is better than anticipated. We are problem solvers. The cost savings speaks for itself. We have a flexible development model that incorporates internal and external resources that delivers a significant competitive advantage.

The Gemini offers a wide range of services including business process outsourcing, onsite technical consulting, offshore software development, and product lifecycle management. By combining the domain expertise with the low cost offshore software development, our Offshore Delivery Model delivers enhanced productivity, a cost savings and faster time to market. The Gemini's mature offshore software development model has reduces your development cost by 45% in the first year alone while improving your overall time to market.

Our three dimensional service structure delivers end-to-end solutions in a variety of industries, technologies and service practices - maximizing the value delivered for our customers through a diversified, adaptable and synergetic business and service model.

The Gemini Solutions, a leading Healthcare and Education software products provider, distributes and supports worldwide. The Gemini operations and distribution & support network for software products and solutions are spread across India & Asia, UK and US.



## Our Vision

---

We are an organization with Global standards in all aspects of business such as Quality, Innovation and Relations.



## Our Mission

---

## Our Mission

We achieve our Goals by providing global quality software solutions at competitive prices, by inspiring people to be innovative and by building respectable and mutually beneficial partnerships with our customers and vendors during this continuous journey.



## Our Values

---

- We build trust with integrity and transparency in all our transactions
- Continuously improve our processes and products to provide solutions that exceed expectations
- Be fair and just in our day to day business processes
- Build an innovating team with Customers, Vendors and Colleagues
- Outperform the established benchmarks and Set the standards for the industry to follow



## *Our Team*

---

The Gemini team is motivated, knowledgeable and possesses a high degree of business acumen. These are the recipes that have formulated the Gemini into an innovative and knowledgeable company. Thorough professionals, with authority in the technologies they handle, the members of our team have immense experience and training backing them to meet client's demands. The team at the Gemini is adept at delivering results under tight schedules and constraints of time.



## *Our Commitment*

---

With a view to keeping abreast of the rapid changes in information technology, The Gemini is committed to deliver quality solutions to the varying information technology demands. We have invested in a state-of-the-art development centre to cater to the growing demand for world class IT solutions. In this development centre we are developing packaged software solutions and customized software solutions for our esteemed clients.

# THE NEED FOR THE GEMINI ERP



*Running a business in today's competitive and dynamic environment is very difficult. The market has grown from a local to a global one, with stakeholders and competitors all over the world. Companies need to react to opportunities within seconds to survive, succeed and rise to the top.*

## Are you equipped for this challenge?

- Do you have a technological platform that can handle all your business functions in an integrated fashion?
- Does the platform cover the entire value chain, including your suppliers and customers?
- Do you and your executives have a real – time, 360 – degree view of the business? Do
- you have the required analytical tools to support planning and decision – making?

An Enterprise Resource Planning (ERP) could be just what you need. However, implementing an ERP solution is a tricky task. While it has compelling benefits, it could also lead to problems like delayed implementation, cost overruns, transition issues and questionable Returns on Investment (RoI). The Gemini ERP solution helps you address these challenges effectively.

## INTRODUCING THE GEMINI ERP

THE GEMINI ERP weaves your business together seamlessly, from end – to – end, across the entire value chain. The solution is developed with a model – driven methodology, and has the ability to integrate business processes, re – use assets, and change on demand. It ensures mobility and usability, along with speed, intelligence and context-awareness.



Drawing from its experience of handling than 300 clients in India alone, THE GEMINI brings in several features that make it unique:

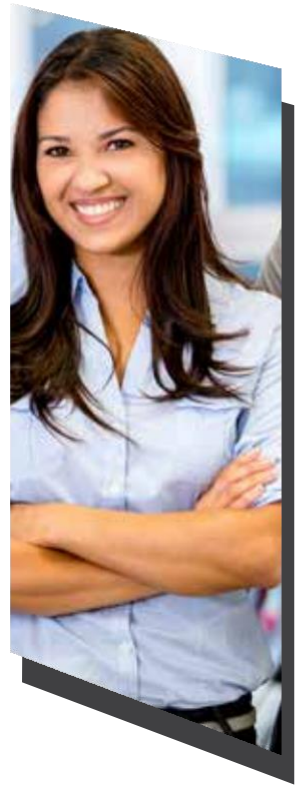
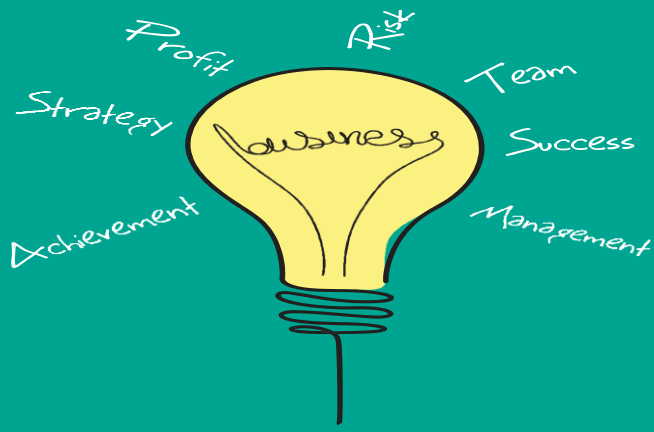
- Multi – tenant architecture, with separate data storage
- Configurable state / context – based on industry / customer – specific processes Extension Development Kits to enhance the application
- Intuitive ERP that allows you to manage business by exception with PDK feature
- Support for multiple operating systems: Microsoft, Linux
- Highly-secure hosting data center with state – of – the – art security infrastructure
- Configurable role – based security
- Functionally and architecturally scalable solution

# FOR BUSINESSES THAT DON'T COMPROMISE

THE GEMINI ERP is quickly implemented, with low investment, and offers noticeable business benefits within a short period of time:



- Zero investments on server hardware, system software, building, IT staff, etc.
- Ability to access the solution through multiple devices like iPad, PDAs and mobile phones
- Predictable IT costs and lower Total Cost of Ownership
- (TCO) Integrated view of the entire supply chain along with powerful End – to – end analytics
- 360-degree visibility of all process with online, real – time updates
- Seamless integration across all the different departments
- Traceability of items, promotions / discounts, stock transfers, returns and claim management
- Improved cash-flow and reduction in overheads
- Improved Service Management and Service – Level Agreements (SLA), resulting in increased productivity and happier customer.



## OUR PRODUCTS:

- *Hospital Information Management System*
- *Education Support System (School, College, University)*
- *Enterprise Resource Planning*
- *Human Resource Management System*
- *Dental College & Hospital Management System*

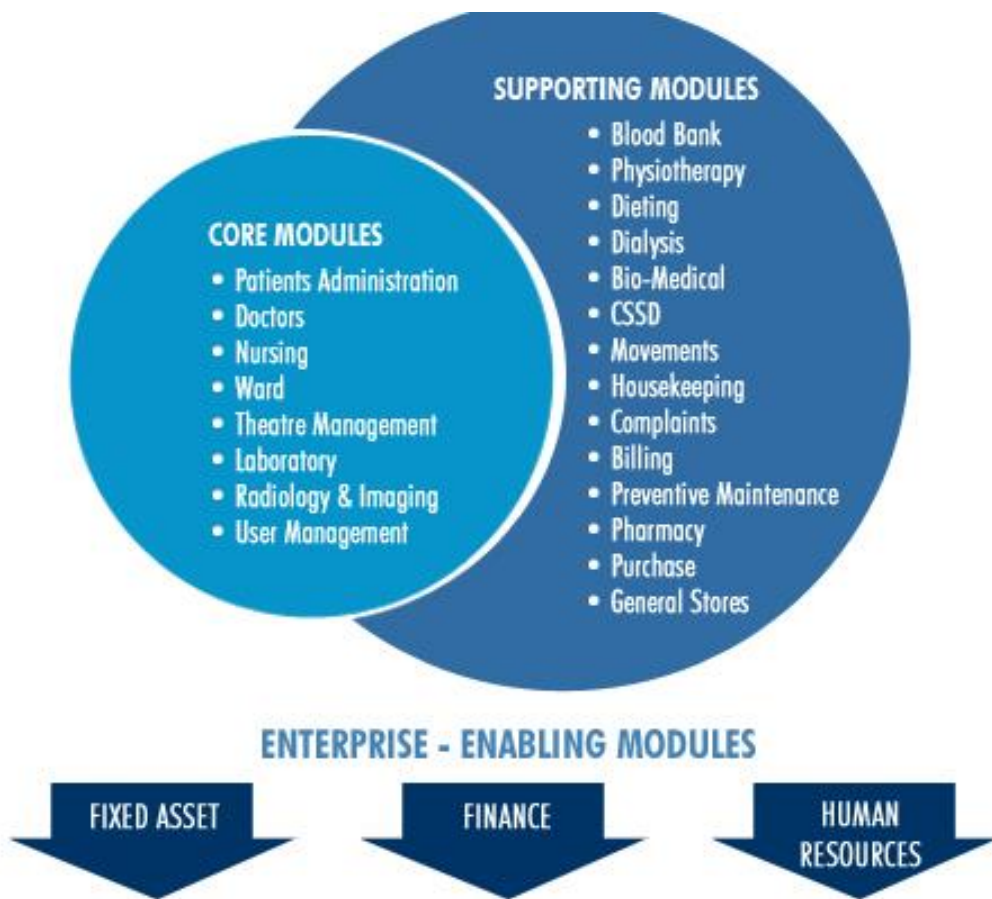




# Hospital Information Management System

Modern health systems tend to become increasingly complex with stakeholders interconnected and constantly changing environments. Any well-managed institution needs information across the length and breadth of health information systems. In many respects; there is a need to monitor what health care services are achieving across the range of basic values and directing principles. As responsiveness contributes to relevance, accessibility and availability of information improves transparency, which in turn strengthens the credibility and legitimacy of health institutions.

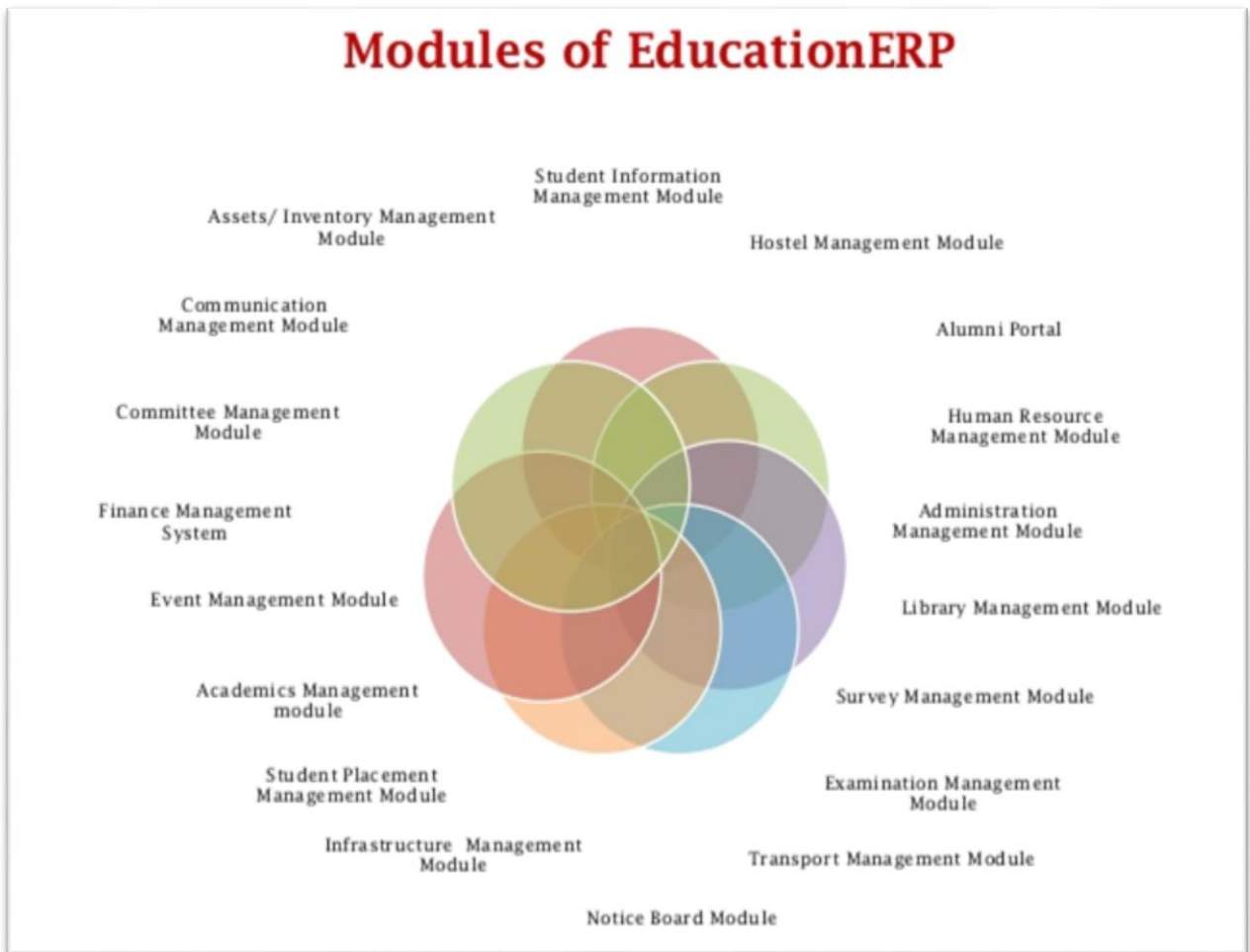
**The Gemini Hospital Management Software** provides a comprehensive solution to the health care industry. The application is capable of handling clinical, administrative and financial aspects of patient care. Information about appointments, bed availability, and schedules of doctors, specialized services, and treatments are easily accessible.





# Education Support System

Our Education ERP has been designed to cover the in depth functionalities of any Educational Institute/ University/ Group of Institutions, from the perspective of various users carrying different roles and responsibilities such as Students, Teachers, Staff, Principal, Management, Parents, Alumni etc. All the data is managed in a time sensitive manner along with the rules and policies applicable at that time, so whenever required, the exact information can be re-produced as it is. The entire solution is designed based on a modular approach that gives flexibility to our clients to choose desired modules as per their requirements.





# Enterprise Resource Planning

The Gemini has a new way of approaching how enterprise resource planning (or ERP systems) and business software solutions are designed, developed, and deployed. We've changed the way ERP software is used to maximize productivity across your business. ERP can inspire your company to innovate your business so you can deliver inspiration to your customers. The Gemini is more than business software; it is the key to possibilities not yet imagined. The Gemini ERP software provides a single point of accountability to drive increased profit, whether you're operating locally, regionally, or globally.





# Human Resource Management System

THE GEMINI Human Resource Management System is a complete solution for the human capital management of your business. This HR & Payroll Software helps to effectively organize and easy to manage the human resource functions and responsibility. The Gemini HRMS Solution makes the management less involved in time consuming administrative and payroll tasks. With many years of effort and experience our HR & Payroll Software has been designed to meet the requirements of the Customers. The Gemini HRMS Solution helps to manage a truly paperless office by maintaining the documents electronically and sending e-Payslip through e-mail etc. The Gemini Human Resource Management System allows setup unlimited number of employees, departments, projects, allowances, deductions etc.





# Dental College & Hospital

Web based Dental College and Hospital Information Management System is an ERP suite of software modules to computerize any large scale hospital and connected clinics and its branches. It is fully online web based software. The information is available anytime, anywhere. There are plenty of exhaustive modules available in The Gemini Web Dental ERP , which makes it User friendly, Highly versatile, Quick installable, Completely Database driven, Centralized Database, Hospital Information Management System ERP software available in the market today

Our Software for dentists and dental practice management covers all aspect of dentist related queries. Our modern dental software includes appointment scheduling, imaging, and 3d dental charting. Our dental Practice Management software specifically designed for today's busy Dental clinics or Dental Hospitals. Our dental software helps for appointment scheduling, billing management.





## Contact us:

Please let us know what service you are interested in by completing the form below. We will get in touch with you shortly. Alternatively for sales queries, you can write to [techsupport@thegemini.co.in](mailto:techsupport@thegemini.co.in)

Contact No : +91 8000919516  
E-Mail : [techsupport@thegemini.co.in](mailto:techsupport@thegemini.co.in)  
Development Cell : Ahmedabad  
Technical Support : Udaipur, Mumbai, Bangalore, Noida